

Notes to Statements

SOURCES OF FUNDS

The Sisters of Mary accepts donations in cash and in kind to support its charity programs.

CONTRIBUTIONS from solicitations by FUNDRAISING OFFICES

Fundraising office	IN LOCAL CURRENCY		IN USD	
	2020	2019	2020	2019
Die Schwestern Maria, Germany	€14.000.000,--	€13.526.418,77	16,129,223.90	15,103,040.67
Weltkinderdoerfer der Schwestern Maria, Switzerland	CHF3.570.000,--	CHF6.340.000,--	3,800,850.78	6,310,359.82
Die Schwestern Maria, Austria	€1.083.727,95	€1.102.343,62	1,239,560.10	1,243,404.00
World Villages for Children, USA	\$2,282,016.96	\$3,181,508.90	2,282,016.96	3,181,508.90
Stichting Wereld Dorpen Voor, the Netherlands	€1.200.000,--	€300.000,--	1,424,930.00	332,880.00
Villages Du Monde Pour Enfants, France	€1.118.794,--	€4.626.911,30	1,242,319.35	5,165,983.37
Stichting Wereldorpen Voor Kinderen, Belgium	€500.000,--	€450.000,--	562,395.00	500,682.77
World Villages for Children, the United Kingdom	£2,070,023.75	£2,081,000.00	2,663,903.78	2,657,350.50
		TOTALS	29,345,199.87	34,495,210.03

Table 1. Contributions from fundraising offices

Country of Origin	Currency	Average Exchange rate of Local Currencies to US Dollar	
		Year 2020	Year 2019
Germany	Euro	1.152	1.117
Switzerland	Swiss Franc	1.065	0.995
Austria	Euro	1.144	1.128
The Netherlands	Euro	1.187	1.110
France	Euro	1.110	1.117
Belgium	Euro	1.125	1.113
The United Kingdom	Great British Pound	1.287	1.277

Table 2. Average exchange rate of overseas remittances in local currency to USD as received by Headquarters

Country Program	Currency	1 USD
Korea	Won	W1,088
Philippines	Peso	P48.992
Mexico	Peso	\$20.944
Guatemala	Quetzal	Q7.705
Brazil	Real	R\$5.198
Honduras	Lempira	L24.298
Tanzania	Tanzanian Schilling	TZS2,377.423

Table 3. Average exchange rates of 1 USD in local currencies

The fundraising offices provide the major financial support for the charity programs of The Sisters of Mary. Peoples from different countries come to know about the needs of the children and adults under the care of The Sisters of Mary and give donations through these offices. The Sisters of Mary and the fundraising offices work hand in hand to achieve their goal of supporting the charity programs maintained and operated by The Sisters of Mary.

Performance and accomplishments of each charity program are regularly shared by the sisters to the donors through the fundraising offices. These updates may be browsed at www.worldvillages.org, www.schwester maria.de, www.villagesdumonde.fr, www.schwester maria.at, www.worldvillages.org.uk, www.weltkinderdoerfer.ch, www.werelddorpenvoorkinderen.nl and www.werelddorpenvoorkinderen.be.

The pandemic in 2020 caused by the COVID-19 virus disrupted the operations of The Sisters of Mary charity programs during the same year. Children in Honduras, Brasilia and the Philippines were not able to spend their vacations at home and stayed inside the compounds of the school. Online classes were held by teachers who were quarantined in

their homes. Completion of building improvements and construction of workshops were delayed. Amidst the disruption, The Sisters of Mary’s most urgent priority was to ensure that all children had enough food to eat within the compounds of the schools.

LOCAL DONATIONS AND SUBSIDY

Country	Government Subsidy	Local Donations
Korea	\$12,159,673.37	\$3,348,193.09
Philippines	1,557,821.26	1,763,019.33
Mexico	none	1,532,421.96
Guatemala	none	342,186.84
Brazil	none	63,115.62
Honduras	246,930.27	337,328.90
Tanzania	none	239,815.11

(in approximate dollar values)

Table 4. Donations and subsidy received by each country program

The Sisters of Mary continue to receive subsidies from the government in Korea, Honduras and the Philippines.

The Korean government subsidized 70.98% of the expenses incurred by The Sisters of Mary charity programs in Korea. Local donors, especially alumni, continue to support the charity programs of The Sisters of Mary. The subsidy from the Korean government and the local donations are the sources of funds for the operations of The Sisters of Mary in Korea.

The Philippine government through the Department of Education and the Honduran government through the office of their president support the charity programs of The Sisters of Mary in their countries.

Various local NGOs provide support to each country program. These organizations are the Association of Sponsors of Sisters of Mary in Korea, Fr. Al’s Children Foundation Inc. in the Philippines, Fundacion Aloysius in Mexico, Instituto Social das Irmas de Maria in Brazil and Asociacion Aloysius in Guatemala and Honduras. Local donors may benefit from either full or limited deduction and exemption from donor’s tax when they donate.

This year, so many individuals, organizations and local government offices supported the charity programs of The Sisters of Mary by donating food, school materials, cleaning materials, face masks/shields, shoes, alcohol, soap, shampoo, hygienic products, vitamins, bicycles, medicines, toilet paper, underwear, t-shirts and other articles of clothing.

EXPENSE

Administrative Expenses, Salaries & Wages

Administrative expenses of the charity programs average at 3.4% of the total expenses. The administrators and superiors in all seven countries of operations are religious sisters who do not receive salaries. Salaries and wages of all employees of the schools, hospitals and homes run by The Sisters of Mary form part of the operating expenses.

Classification of Expenses	Items recognized
1. Operating Expenses	Direct Costs
2. Administrative Expenses	Office supplies, advertisements, security services, taxes & licenses (duly appropriated)
3. Other Expenses	Cost of construction, equipment, furniture & land

Table 5. Classification of expenses

Supplementary Information

The Sisters of Mary is a religious congregation of women under the leadership of its Superior General, Sr. Maria Cho. It is a congregation recognized by the Congregation of Religious Institutes in Rome on March 2, 2000 as a Religious Institute of Pontifical Right.

Founder: Venerable Aloysius Philip Schwartz (1930-1992)

Founded on: August 15, 1964

**Officially decreed
as a Diocesan Religious
Congregation on:** March 2, 1993

**Declared as Religious Institute
of Pontifical Right on:** March 2, 2000

**Countries wherein charity programs
for the poorest of the poor are operated
and maintained:** Korea, the Philippines,
Mexico, Guatemala
Brazil, Honduras and
Tanzania

**Overall Chairperson of the Board
of all charity programs:** Sr. Maria Cho

Headquarters: Sisters of Mary of
Banneux, Inc.
Biga, Silang, Philippines

Purposes of the
Sisters of Mary of Banneux, Inc.

- (a) To establish, operate and maintain a child welfare program for the care and education of underprivileged children, especially orphaned and abandoned children and street children, and to provide a free medical service program for the poorest of the poor;
- (b) To set-up, supervise and maintain a shelter for the destitute and the homeless, the care and rehabilitation of mendicants and the mentally or physically handicapped and shelter for unwed mothers;
- (c) To establish, provide and maintain a medical service program that will extend health and medical services to the above beneficiaries; and
- (d) To devise and maintain other programs to assist and serve the poorest of the poor.

Article 2 of the Constitutions of The Sisters of Mary defines their purpose as following Christ more fervently in prayer and more closely proclaiming the Kingdom of God particularly in doing good to people, concretely in terms of educational/vocational welfare of the underprivileged children or youth, medical care to the sick and the dying, shelter service to the homeless and the helpless.

THE SISTERS OF MARY, INC. Korea

Profile

Year of Incorporation

1 9 6 8

Place of operations

Busan, South Korea



The Sisters of Mary operates and maintains charity programs for child and adult welfare and medical care in Korea.

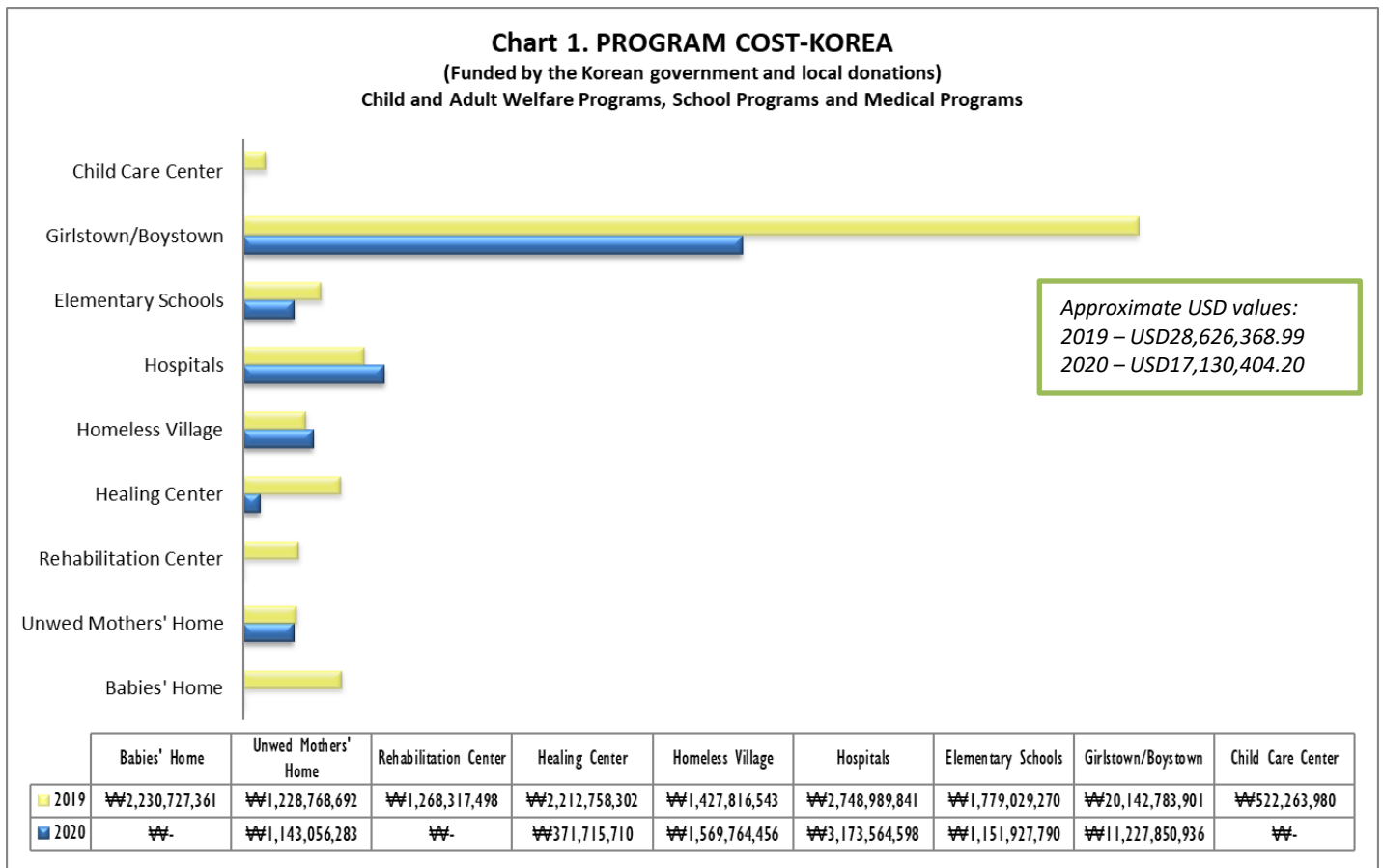


BUSAN, Korea

The Sisters of Mary operates and maintains charity programs for education, medical care, child and adult welfare in Korea. Expenditures for these programs include operating expenses, administrative expenses and other expenses.

Two buses and computers for the laboratories were purchased this year.

The construction of the Aloysius Creative Education Center, which was started in 2019, will be finished by February 2021. However, the Center will no longer be part of the charity programs of The Sisters of Mary in Korea. Upon completion of the center, the nuns will continue to operate the center as trainers, instructresses or in-charge in collaboration with other foundations, local government offices, and private corporations.



CHILD WELFARE AND SCHOOL PROGRAMS

BOYSTOWN AND GIRLSTOWN Busan (1964)

The Boystown and Girlstown in Busan provide shelter and education to abandoned or orphaned children, residential care for babies and temporary care for toddlers.

BUSAN

126	Girls
145	Boys
19	Teachers
104	Workers
3	Nurses
32	Nuns

ALOYSIUS HEALING CENTER Busan (2010)

The center accepts students with emotional and behavioral problems for consultation, guidance, counseling, treatment and therapy.

BUSAN

12	Out-patients per day
5	Workers
3	Nuns

ADULT WELFARE PROGRAMS

MARIA VILLAGE OF THE HOMELESS Busan (1969)

Maria Village of the homeless gives shelter for homeless, destitute and handicapped men and women and provides some medical assistance to tubercular patients.

BUSAN

93	Residents
17	Workers
2	Nurse
3	Nuns

EXPECTANT MOTHER'S HOME Busan (1984)

The home provides temporary residential care for unwed pregnant women and their babies upon birth.

BUSAN

13	Residents
6	Babies
11	Workers
1	Nurse
2	Nuns

MEDICAL PROGRAMS

ALOYSIUS HOSPITAL Busan (1970)

The hospital provides medical and nursing services for migrant workers and the poor who cannot obtain healthcare benefits.

BUSAN	
151	Average daily out-patients
14	Average daily admissions
17	Workers
3	Doctors
19	Nurses
6	Nuns

The Aloysius Hospital continues to provide medical services to migrant workers and poor people in 2020. No Covid-19 patients were treated at the hospital during the year. The Korean government appointed accredited hospitals for the treatment and confinement of Covid-19 patients.

SISTERS OF MARY OF BANNEUX, INC.

Philippines

Profile

Year of Incorporation

1 9 8 5

Places of operations

Biga & Adlas, Silang, Cavite;
Talisay & Minglanilla, Cebu



The Sisters of Mary operates and maintains charity programs for child and adult welfare and medical care in the Philippines.



CAVITE and CEBU, Philippines

The charity programs in the Philippines continue to provide temporary shelter and junior and senior high school with specializations in different vocation trainings to boys and girls from the poorest of the poor families aged between 12-18 years old. Out-patient medical care for the poor and the students is provided by the infirmaries. The Sisters of Mary with the Brothers of Christ provide residential care and permanent shelter in Amadeo, Cavite to homeless mentally-challenged men. Male out-of-school youth undergo classes in General Trias to prepare them for an acceleration examination to be eligible for a high-school diploma. Technical courses are integrated in these classes to further qualify the graduates for jobs. Expenditures include operating expenses, administrative expenses and other expenses.

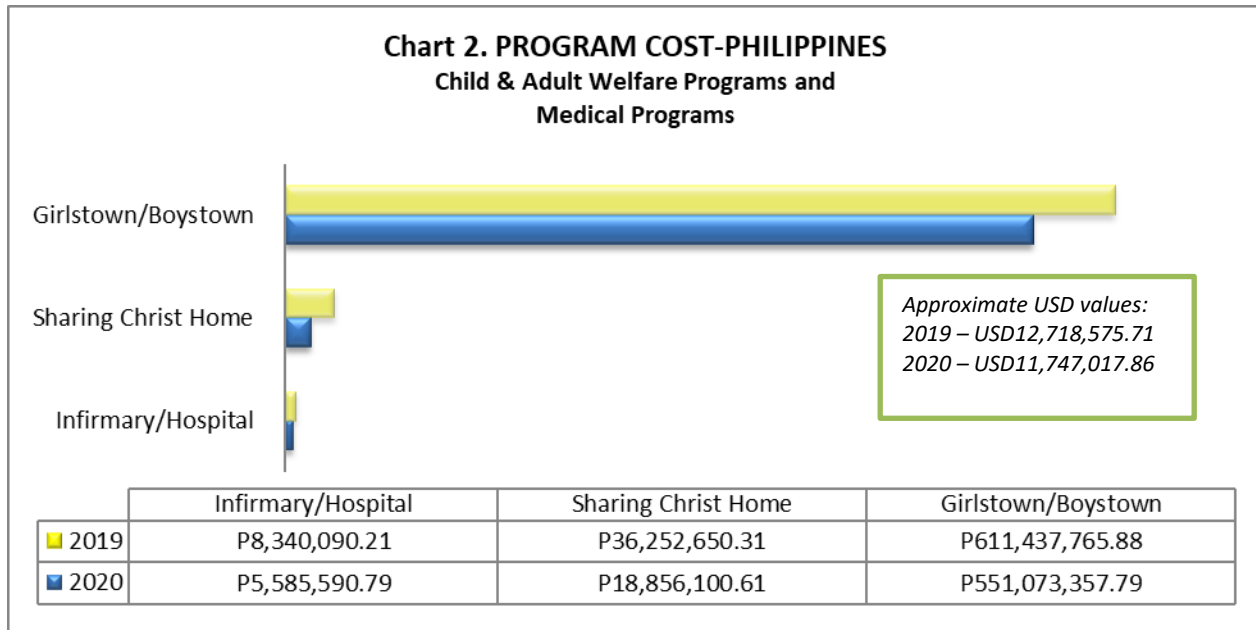
In Biga, renovations of toilets and showers, installation of faculty workstations, rehabilitation of smoke detectors, reactivation of fire and jockey pumps at Doty Building and purchase of servers, computers and other IT requirements were completed by December in 2020. A Biology laboratory was also completed this year. The completion of the modernization of 3 units of elevators and the Academic Information Management System were put on hold in 2020. Of the three elevators for modernization, only one was completed in 2020. Work for the Academic Information Management System, that should provide a web-based student management and enrollment system by 2020, started in December 2020 moving the completion date to December 2021. The general renovation and application of the Flowcrete flooring system of the Sullivan building kitchen were completed in January 2020 before the pandemic lockdown.

The upgrading of materials and equipment for the Shielded Metal Arc Welding (SMAW) class and the purchase of high-speed sewing machines for Adlas were completed in February 2020. Purchase of computers for CNC milling machine operations and upgraded machines for Machining classes were made towards the end of 2020.

Repair of the downspouts for the three buildings in Talisay were completed in February 2020. Installation of whiteboards for classrooms were also done. The gym sound system and stage lighting system were completed in 2020 as well. Projects for 2020 that were put on hold during the year included the construction of the audio-visual room, renovation of the library, purchase of sewing machines and steel cabinets. These projects will be completed in 2021.

GI ducting and replacements of exhaust fans, purchase of gas ovens, repainting of flooring of the machining shop, replacement of emergency and exit lights were completed in Minglanilla during the year. The purchase of the Senior High School Board Completion and Mobile Training Kit was put on hold in 2020. The project will be completed in February 2021.

No new children were accepted in the Philippine charity programs during the year. Children currently enrolled were not able to go home for their Christmas vacation. The strict quarantine protocols in the country did not make it possible for the children to travel anywhere during the year.



Child & Adult Welfare Programs

BOYSTOWN & GIRLSTOWN Biga (1985), Talisay (1990), Adlas (1991), Minglanilla (1995)

The Boystown and Girlstown in Cavite and Cebu are residential schools that provide high-school education with intensive vocational training for boys and girls aged 12-18 years of age who come from the poorest of the poor families all over the country.

BIGA	
2,580	Girls
64	Teachers
67	Workers
39	Nuns

ADLAS	
1,828	Boys
57	Teachers
60	Workers
26	Nuns

TALISAY	
2,686	Girls
81	Teachers
60	Workers
26	Nuns

MINGLANILLA	
1,798	Boys
59	Teachers
53	Workers
16	Nuns

SHARING CHRIST HOME General Trias (2008)

The Home provides Alternative Learning System (ALS) Program Education, technical training and residential care services to out-of-school youth.

SHARING CHRIST HOME Amadeo (2012)

The Home provides permanent shelter and residential care to homeless and helpless mentally challenged men.

GENERAL TRIAS

110	Boys
6	Teachers
14	Workers
2	Nuns
16	Religious brothers
1	Priest

AMADEO

24	Residents
13	Religious brothers
1	Priest

Medical Programs

SISTERS OF MARY INFIRMARIES (J.P. Rizal Memorial Foundation) Biga (2010) and (Marie Doty Maternal and Children's Infirmary) Minglanilla (2011)

The Infirmaries provide medical services to all students and medical consultation services to the poor of nearby communities.

BIGA

- 36 Average out-patients per day
- 9 Workers
- 3 Doctors
- 2 Nurses
- 2 Nuns

MINGLANILLA

- 37 Average out-patients per day
- 5 Workers
- 2 Doctors
- 2 Nuns

HERMANAS DE MARIA Mexico

Profile

Year of Incorporation

1 9 9 1

Places of Operations

Chalco, Edo. de Mexico & Acatlán
de Juárez, Jalisco, Mexico

**Hermanas de Maria, Villa de las Niñas
Carr. Chalco-Mixquic Km. 2.5,
Chalco, Edo. de Mexico, C.P. 56600**



**Hermanas de Maria , Villa de los
Niños-Guadalajara
Los Laureles Carr. Fed. 35,
Guadalajara-Jiq. Km. 116,
Acatlán de Juárez, Jalisco, Mexico
C.P. 45700**



The Sisters of Mary operates and maintains charity programs for child and adult welfare in Mexico.

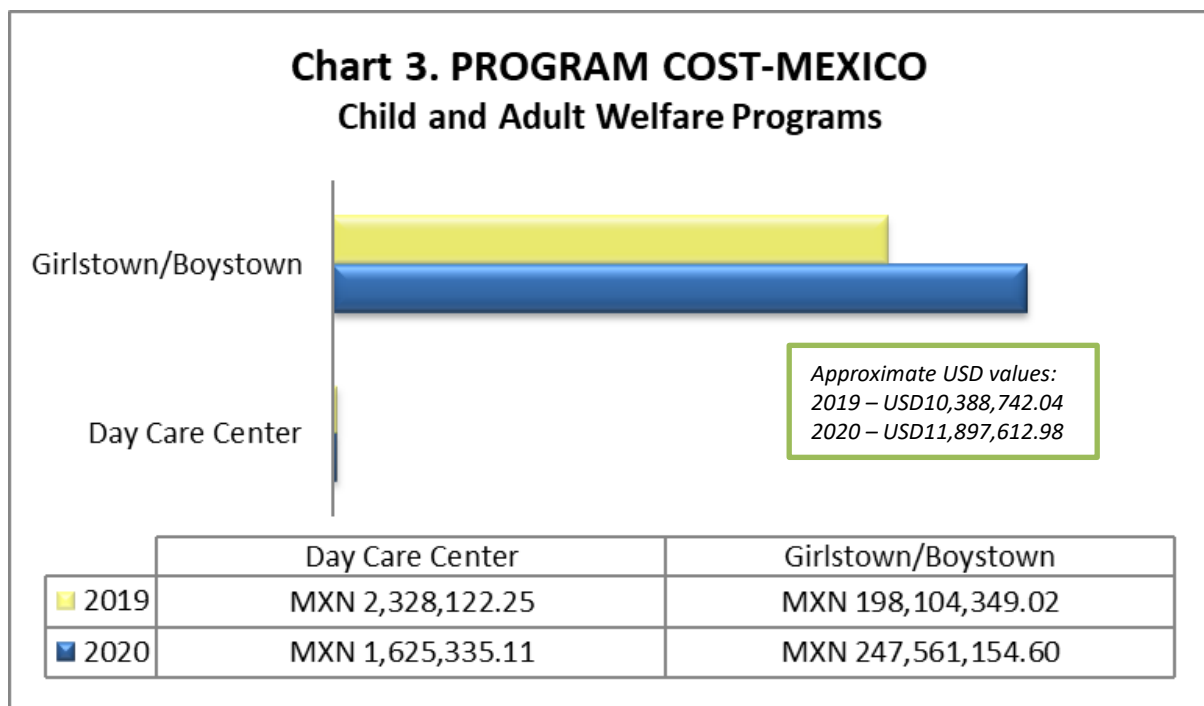


CHALCO AND GUADALAJARA, Mexico

The Boystown in Guadalajara and Girlstown in Chalco continue to provide temporary shelter, technical, middle-school and high school education to children from the poorest of the poor families whose ages range from 12-18 years of age. Toddlers from poor families are looked after at the day care center. Older children in the day care center attend kindergarten classes. Expenditures include operating expenses, administrative expenses and other expenses.

Several projects were completed in Chalco during the year. The repair of the existing well and renovations of toilets and bathrooms were completed. The dental and medical clinic was relocated. School armchairs and materials were purchased. The drilling of a new well and the construction of stairs leading to the clinic at building 5 were put on hold during the year. These projects are expected to be completed by the first quarter of 2021.

The completion of the construction and furnishing of two high-school buildings to accommodate about 500 more children by June 2020 was not possible due to the pandemic. Instead, the project is expected to be completed by the 1st quarter of 2021. Books were purchased for the library.



Child & Adult Welfare Programs

BOYSTOWN & GIRLSTOWN Chalco (1990), Guadalajara (1998)

The Boystown and Girlstown are residential schools that provide technical training, middle-school and high-school for children from the poorest of the poor families whose ages range from 12-18 years old.

CHALCO	
3,079	Girls
99	Teachers
59	Workers
4	Doctors
3	Nurses
51	Nuns

GUADALAJARA	
1,811	Boys
76	Teachers
40	Workers
2	Doctors
2	Nurses
17	Nuns

DAY CARE CENTER Chalco (2007)

The Center is for temporary child-care during specific periods such as parents' time at work. It provides kindergarten lessons to older children.

CHALCO	
123	Toddlers
7	Teachers
9	Workers
2	Nuns

Hermanas de Maria Guatemala

Profile

Year of Incorporation

1997

Place of Operation

Guatemala



The Sisters of Mary operates and maintains charity programs for child and adult welfare and medical care in Guatemala.

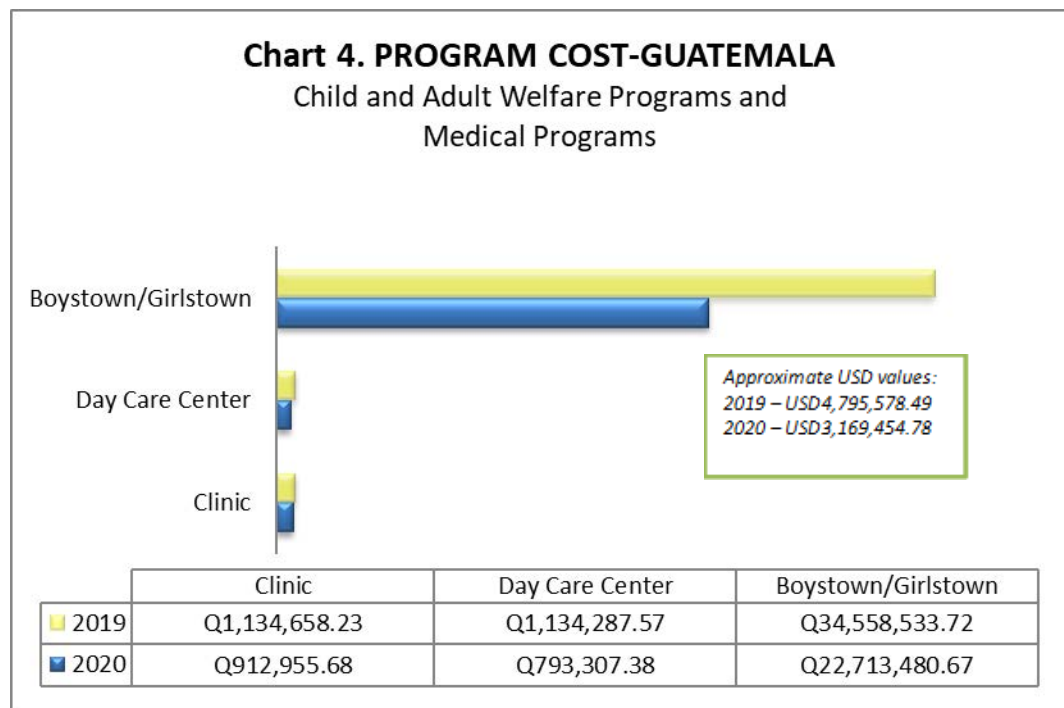


Zona-6 and Zona-13, Guatemala

The Boystown and Girlstown in Zona-6 and Zona-13 continue to provide temporary shelter, middle and high-school education to children from the poorest of the poor families whose ages range from 12-18 years. The medical clinic continues to provide free out-patient medical treatment, medicine and food to poor and sick people. Expenditures include operating expenses, administrative expenses and other expenses.

A school bus was purchased in Zona 13. The construction of the retreat house was completed during the year. Initiation of several projects were moved to 2021 because of the pandemic. Among these projects are the construction of the workshop building, general repair of gym and reinforcement of a slope within the property.

In Zona 6, a washing machine, 15 projectors and 24 laptops were purchased during the year. General repair of the gym at Zona 6 was also moved to 2021.



GUATEMALA

Child & Adult Welfare Programs

BOYSTOWN & GIRLSTOWN Zona 13 (1998), Zona 6 (2000)

The Boystown and Girlstown are residential schools giving middle school and high-school education for boys and girls from the poorest of the poor families aged between 12-18 years old.

ZONA 13	
871	Girls
26	Teachers
25	Workers
15	Nuns

ZONA 6	
1,036	Boys
30	Teachers
32	Workers
2	Doctors
2	Nurses
13	Nuns

DAY CARE CENTER (2004)

The Center is for temporary child-care during specific periods such as parents' time at work. It provides older children kindergarten lessons.

ZONA 13	
144	Toddlers
4	Teachers
5	Workers
2	Nuns

Medical Programs

CLINICA MEDICA MARIA (1997)

The clinic provides medical and nursing services to all students and medical consultation services to the poor of nearby communities.

ZONA 13

68 Average out-
patients per day
5 Workers
3 Doctors
1 Nurse
1 Nun

IRMAS DE MARIA DE BANNEUX

Brazil

Profile

Year of Incorporation

2001

Places of Operation

Brasilia and São Paulo

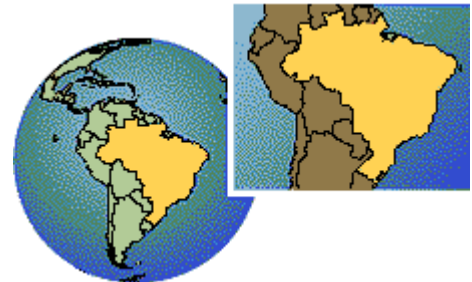
IRMAS DE MARIA
Vila das Crianças de Maria
Chacara 13-B, N. R. Alagado,
Santa Maria-DF 72000-000
Brasilia, Brazil



IRMAS DE MARIA
Bairro Las Palmas
São Bernardo do Campo
São Paulo, Brazil



The Sisters of Mary operates and maintains charity program for child welfare and medical care in Brazil.

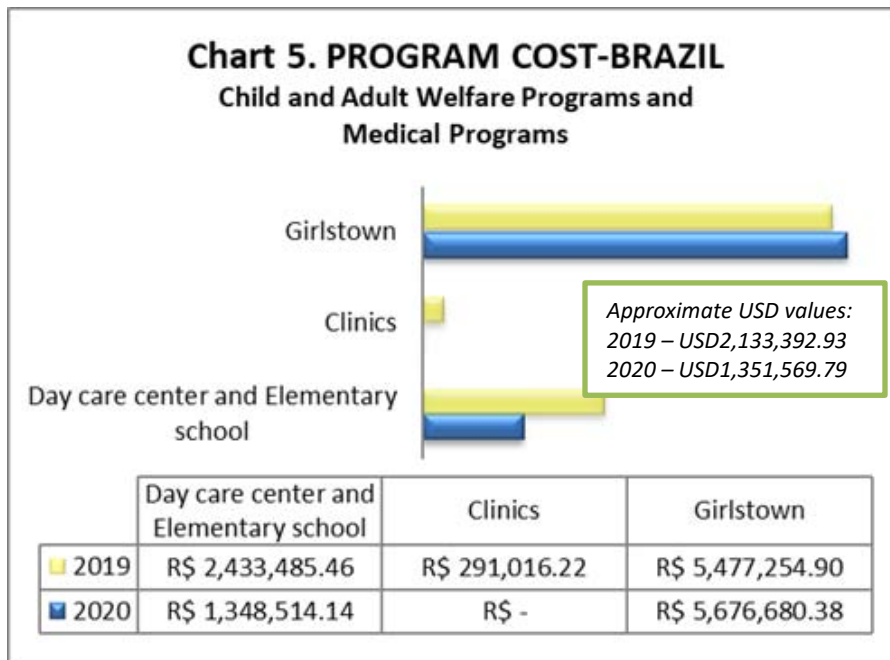


Brasilia and São Paulo, Brazil

The Girlstown in Brasilia continues to provide high-school education to girls coming from poor families. The day care centers in Brasilia and São Paulo provide temporary care to children of parents and guardians who are at work during the day. Older children in the day care center and from the neighboring poor families attend kindergarten and elementary classes. Expenditures include operating, administrative and other expenses.

In Brasilia, general maintenance of buildings is on-going and is expected to finish by the first quarter of 2021.

Also on-going in São Paulo is the repainting of school building that is expected to be completed by the first quarter of 2021. Projects that were put on hold during the year included building a perimeter wall and purchase of a school information management software.



Child Welfare Programs

GIRLSTOWN Brasilia (2002)

The Girlstown is a residential school providing elementary and high school education to girls from poor families.

BRASILIA

850	Girls
32	Teachers
13	Workers
14	Nuns

DAY CARE CENTERS Brasilia (2004), São Paulo (2008)

The centers are for temporary child-care during specific periods such as parents' time at work. They give kindergarten and elementary education to older children

BRASILIA

84	Toddlers
1	Teacher
1	Nuns

SÃO PAULO

156	Toddlers
276	Elementary children
20	Teachers
8	Workers
8	Nuns

Medical Programs

CLINICA MEDICA MARIA Brasilia (2002-2019),

TThe clinic discontinued providing medical consultation services to nearby communities in 2019 but will continue to serve the medical needs of the students.

HERMANAS DE MARIA Honduras

Profile

Year of Incorporation

2 0 1 1

Places of Operation

Tegucigalpa and Amarateca

LAS HERMANAS DE MARIA
Km 8, Carretera a Olancho,
Contiguo a Promdeca



LAS HERMANAS DE MARIA
Aldea Guayabillas, Valle de
Amarateca Costado Norte



The Sisters of Mary operates and maintains charity program for child welfare in Honduras.

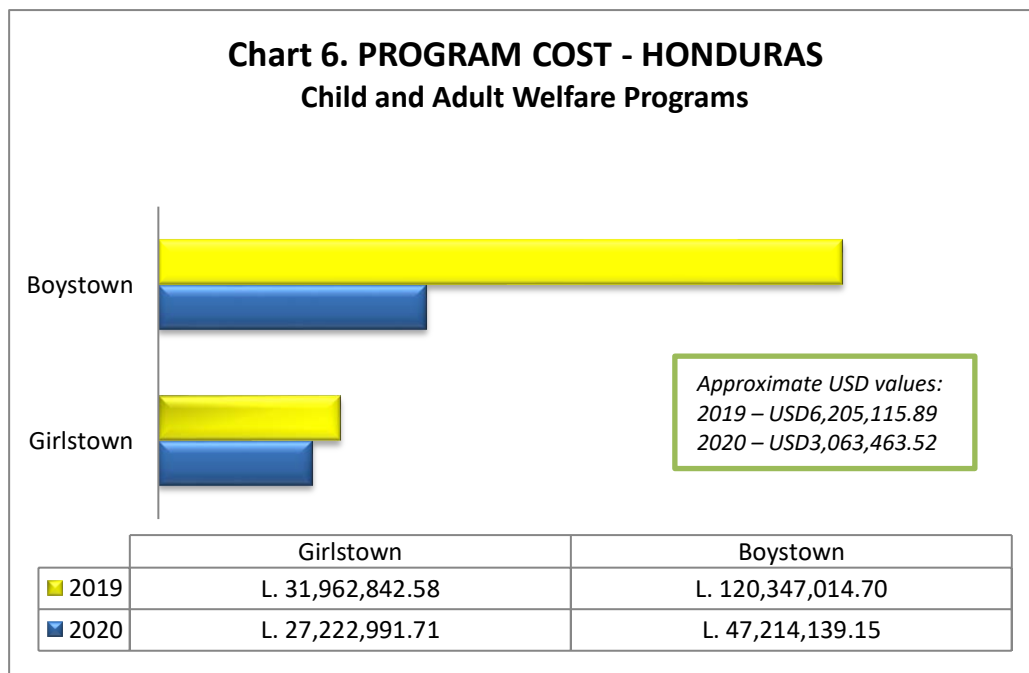


Tegucigalpa and Amaratéca, Honduras

The Girlstown in Tegucigalpa and the Boystown in Amaratéca continue to provide temporary shelter, middle-school and high-school education to boys and girls coming from poor families in Honduras. Expenditures include operating, administrative and other expenses.

Textbooks were purchased in Tegucigalpa. No other projects were completed.

In Amaratéca, the second building and welding workshop were completed this year. The construction of the swimming pool was put on hold during the year and completion of the project has been moved to 2021.



Child Welfare Programs

GIRLSTOWN (2012), BOYSTOWN (2017)

The Girlstown and Boystown are residential schools providing high school education to girls and boys from poor families.

TEGUCIGALPA

657	Girls
30	Teachers
28	Workers
2	Doctors
15	Nuns

AMARATECA

791	Boys
26	Teachers
37	Workers
8	Nuns

THE REGISTERED TRUSTEES OF THE SISTERS OF MARY TRUST Tanzania

Profile

Year of Incorporation

2 0 1 8

Place of Operation

Kisarawi District

**The Sisters of Mary
Kisarawi District,
Dar-es-Salaam, Tanzania**



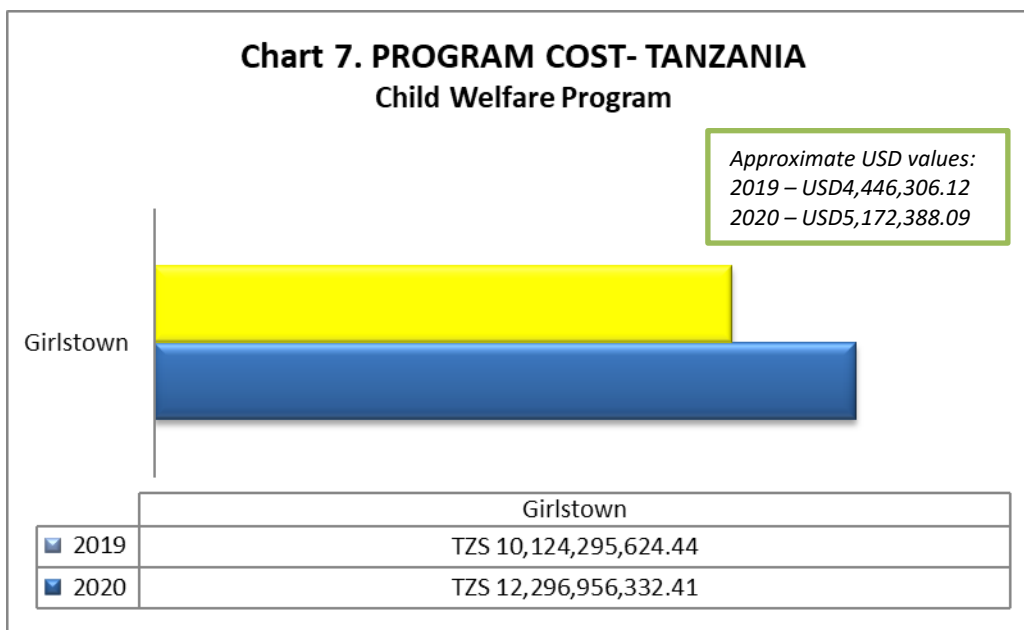
The Sisters of Mary operates a charity program for child and adult welfare in Tanzania.



Makurunge, Kisarawe-Pwani, Tanzania

The Sisters of Mary School in Kisarawe, Pwani Region, Tanzania offers a full curriculum of academic subjects towards achieving the Ordinary and Advanced level qualifications including subjects in Math, Physics, Chemistry, Biology, Geography, History, Civics, Kiswahili, English, Commerce, Bookkeeping to girls 12-15 years of age. These girls come from different regions of the country.

Due to the pandemic, classes in Tanzania were postponed until June. A 5-storey building was constructed during the year and inaugurated on December 10, 2020. The building was fitted out with classrooms, dormitories, kitchen and laundry rooms to accommodate more children. A gymnasium was built and finished during the year as well. Works for a swimming pool was started during the year. A school bus was purchased.



Child Welfare Programs

GIRLSTOWN (2019)

The Girlstown is a residential school providing a full curriculum of subjects including English, Swahili, geography, history, biology, chemistry, physics, civics, agriculture and PE. Also, a training center at the compound in a nearby land provides young women vocational training in tailoring.

KISARAWA

307	Girls
16	Women
14	Teachers
9	Workers
17	Nuns

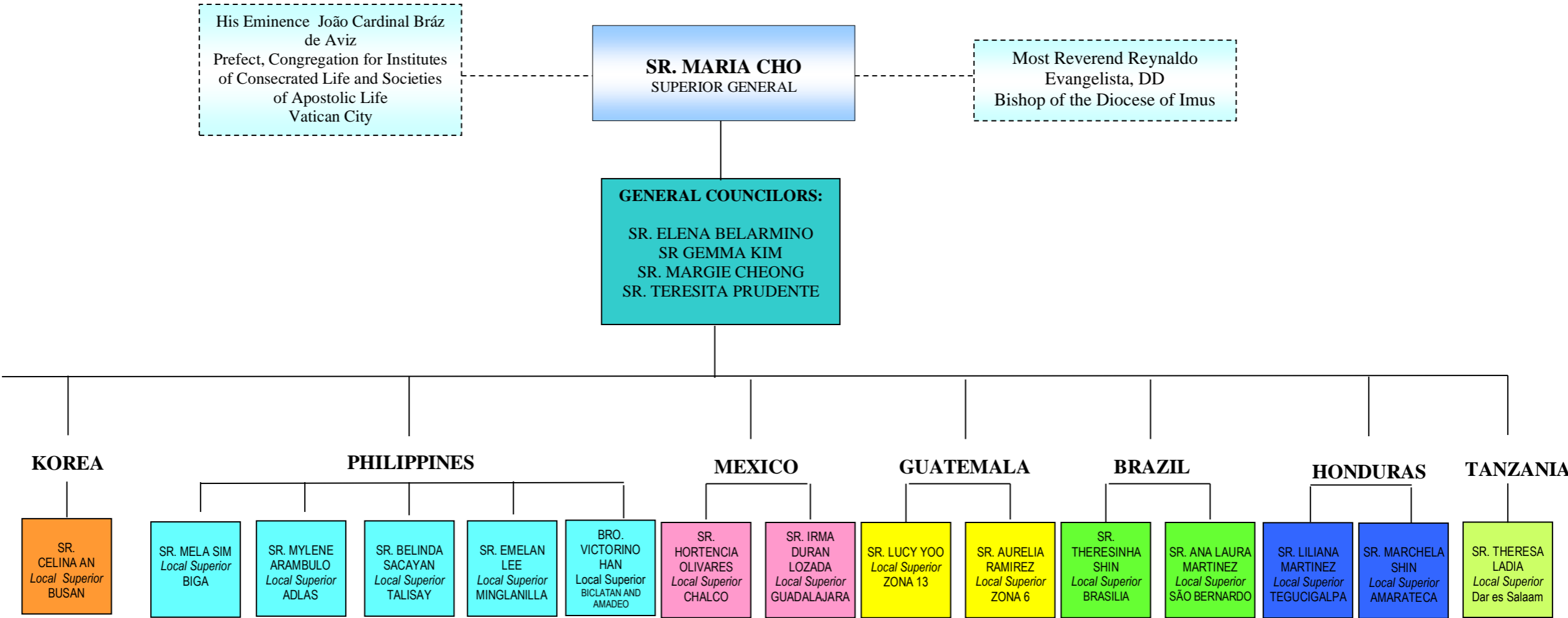
Beneficiaries of The Sisters of Mary Charity Programs



Through the generosity of the people in many places of the world, children and adults are educated, fed, housed, clothed, rehabilitated or healed through the charity programs of The Sisters of Mary. All funds received by The Sisters of Mary are being or will be utilized to promote these services.

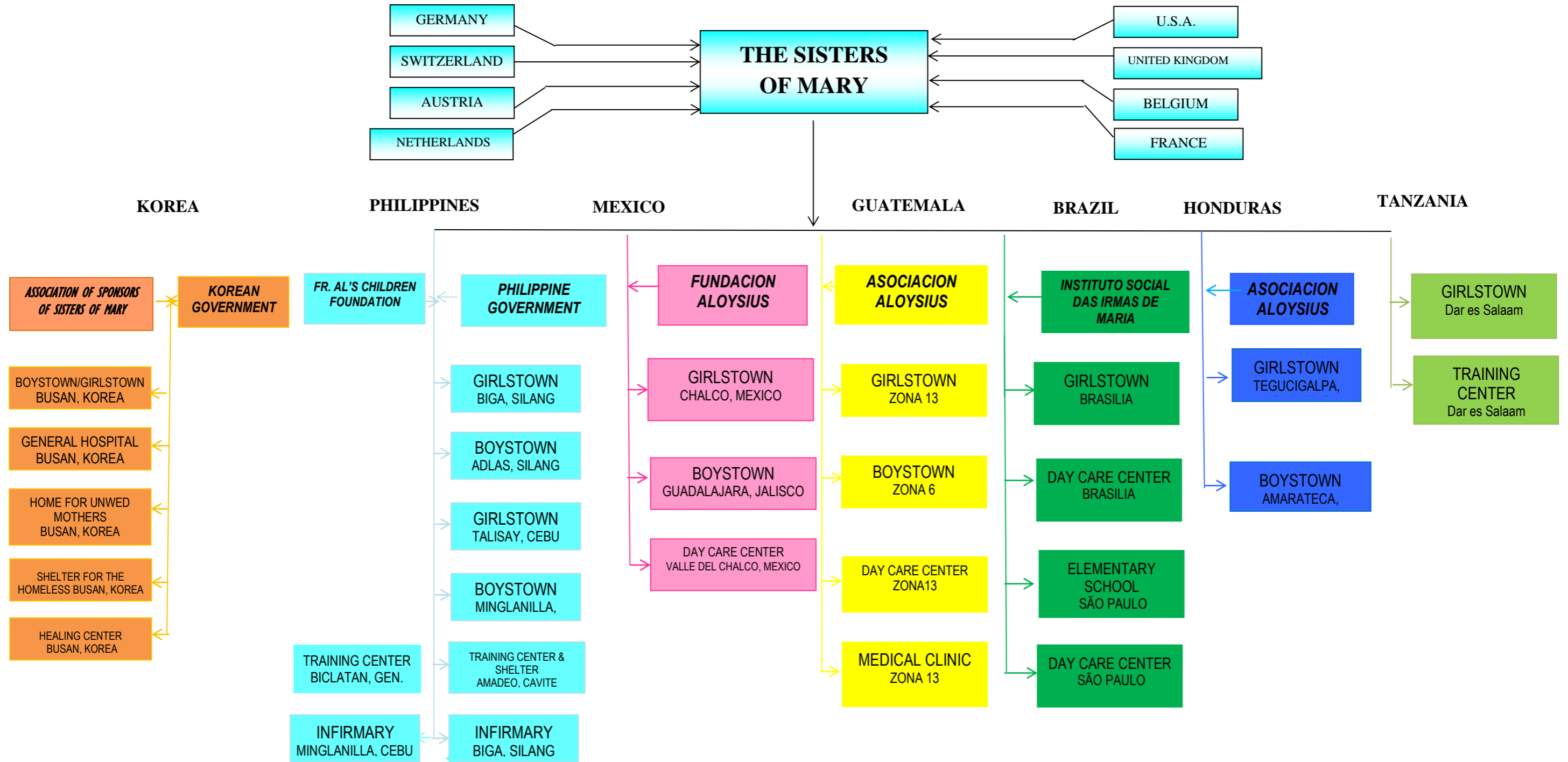
The service and dedication of The Sisters of Mary make these charity programs continue to benefit only the poorest of the poor and alleviate their sufferings.

THE SISTERS OF MARY
FLOWCHART A: ADMINISTRATION



THE SISTERS OF MARY

FLOWCHART B: FUNDING





CONGREGATIO
PRO INSTITUTIS VITAE CONSECRATAE
ET SOCIETATIBUS VITAE APOSTOLICAE

Prot. n. M 257-1/99

D E C R E E

The religious Institute of the **Sisters of Mary** whose principal seat is established in the Archdiocese of Manila, was founded by the Reverend Mgr. Aloysius Schwarts, and erected as of diocesan right on March 2, 1993.

The Sisters engage themselves in educational/vocational welfare of underprivileged children/youth, medical care to the sick and the dying, shelter service to homeless and helpless people.

Supported by the testimonial letters of the other diocesan Bishops concerned, His Eminence Cardinal Jaime L. Sin, Archbishop of Manila, has asked the Apostolic See to have the religious Institute of the **Sisters of Mary** recognized as of pontifical right.

The Most Holy Father Pope John Paul II, having heard the favourable opinion of the Congregation for Institutes of Consecrated Life and for Societies of Apostolic Life, has graciously granted the above mentioned request.


By means of this present Decree, therefore, this Congregation declares that, from now onwards, the Institute of the **Sisters of Mary** is a religious Institute of pontifical right.

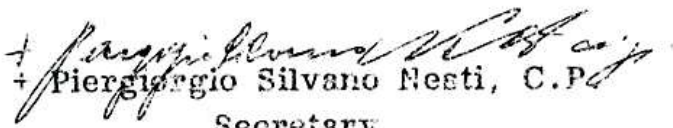
The same Congregation moreover approves and confirms the Constitutions which correspond to the English text kept in its archives.

May the **Sisters Mary** live faithfully their religious consecration and dedicate themselves generously to the apostolate of the Institute, according to their charism.

All things to the contrary notwithstanding.

Vatican, March 2, 2000.


Eduardo Card. Martínez Somalo
Prefect


+ Piergiorgio Silvano Nesti, C.P.
Secretary